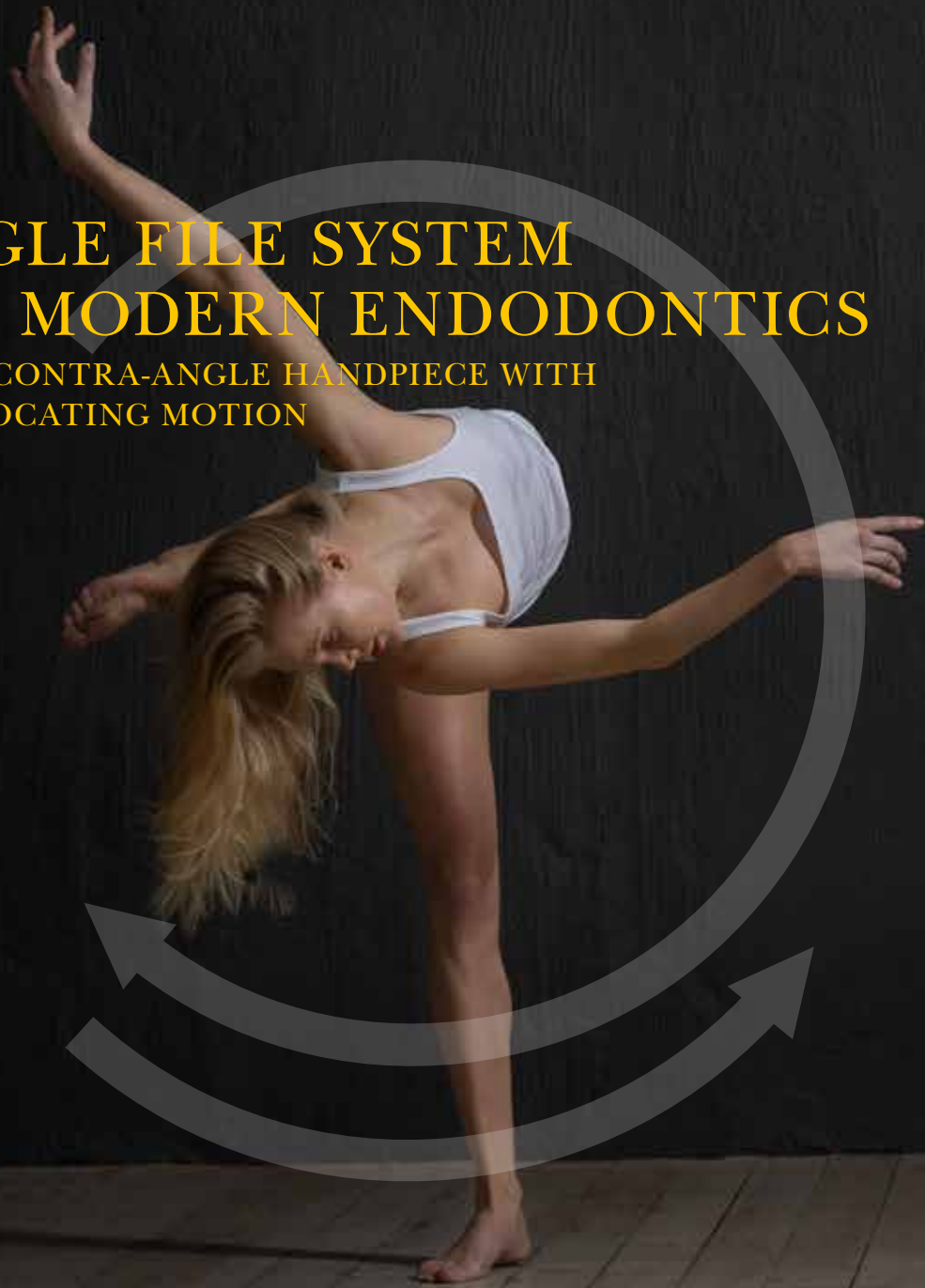


Sendoline[®]

PERFECT ENDO

SINGLE FILE SYSTEM FOR MODERN ENDODONTICS

SMART CONTRA-ANGLE HANDPIECE WITH
RECIPROCATING MOTION



WITH A PLUS



FIVE REASONS FOR CHOOSING THE S1[®] SYSTEM

New technology has simplified endodontics. And now we are making root canal treatment not only even more simple but also more cost-effective. S1[®] is a single file system using a reciprocating motion, designed to facilitate the daily work at your dental practice.



1. Smart contra-angle handpiece

The S1[®] contra-angle handpiece contains a unique, smart solution. An integrated gearbox creates the reciprocating motion – the instrument rotates clockwise and anti-clockwise alternately. You can connect the contra-angle handpiece easily and directly to your dental unit with no need for an external motor.

2. Less risk of instrument fractures

The combination of the instrument's reciprocating motion – the alternating clockwise and anti-clockwise rotation – and the nickel titanium alloy's elasticity and flexibility minimises the risk of instrument fracture.

3. Just one instrument

Because the S1[®] System is a single file system it has several advantages. Treatment is faster, so you can treat more patients. And since you only need one instrument, treatment is easier for you and your dental team.

4. The S1[®] Plus instrument

Sendoline's unique S-profile in combination with longer pitches makes it an instrument which is both effective and flexible. The motion means that the instrument's double cutting edges work extremely effectively in the root canal.

5. Practical packaging

The S1[®] instruments come in a sterile treatment pack or refill pack which has been specially designed to meet today's hygiene standards.



AN EXCEPTIONALLY SMART CONTRA-ANGLE HANDPIECE

The S1® contra-angle handpiece has a unique design, which makes it easy to use applying steady movements, for the best ergonomics.

The motion is generated by an integrated gearbox – a smart solution which allows you to connect the contra-angle handpiece directly to your dental unit. The motorless concept also means the S1® System is cost-effective and meets today's hygiene standards.

The contra-angle handpiece can be connected to an apex locator using the accompanying apex clip. You clean and sterilise the contra-angle handpiece just as you do other instruments.

SAFETY

During the reciprocating motion the instrument rotates clockwise and anti-clockwise alternately, which reduces the risk of instrument fracture.

GOOD ACCESSIBILITY

The contra-angle handpiece has a small head with an angle of 90°, giving you more freedom in the area around the molars.

SIMPLICITY

Easy connection to your dental unit. The contra-angle handpiece transfers the motor's energy from the dental unit to the instrument and converts the rotation into a reciprocating motion.

FREEDOM OF CHOICE

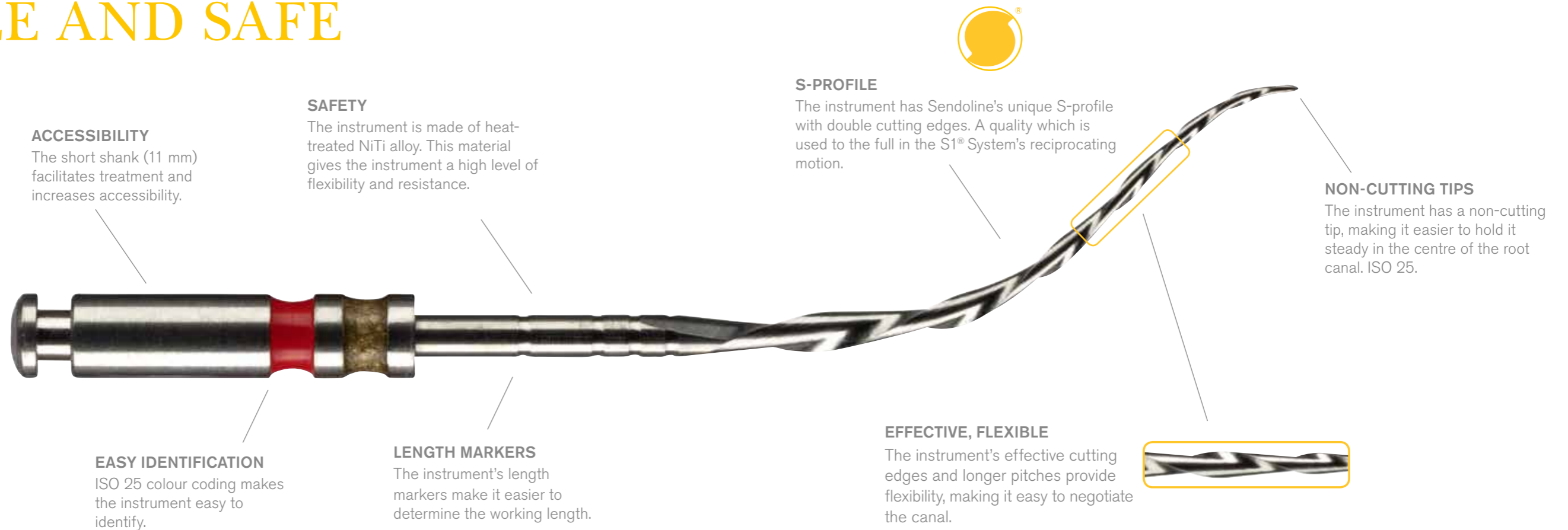
The S1® Apex Clip enables easy connection to an apex locator.



ONE INSTRUMENT - S1[®] PLUS

EFFECTIVE, FLEXIBLE

SIMPLE AND SAFE



ACCESSIBILITY
The short shank (11 mm) facilitates treatment and increases accessibility.

SAFETY
The instrument is made of heat-treated NiTi alloy. This material gives the instrument a high level of flexibility and resistance.

EASY IDENTIFICATION
ISO 25 colour coding makes the instrument easy to identify.

LENGTH MARKERS
The instrument's length markers make it easier to determine the working length.

S-PROFILE
The instrument has Sendoline's unique S-profile with double cutting edges. A quality which is used to the full in the S1[®] System's reciprocating motion.

NON-CUTTING TIPS
The instrument has a non-cutting tip, making it easier to hold it steady in the centre of the root canal. ISO 25.

EFFECTIVE, FLEXIBLE
The instrument's effective cutting edges and longer pitches provide flexibility, making it easy to negotiate the canal.

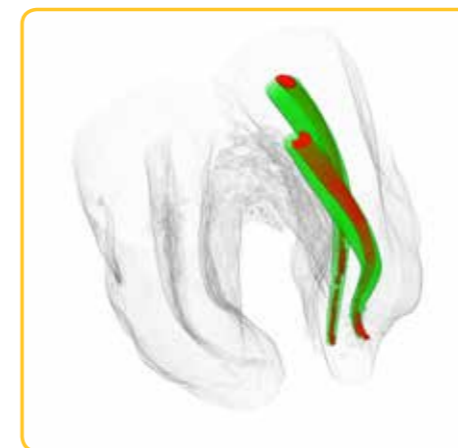
As the name suggests, the S1[®] System allows you to carry out root canal treatment using a single mechanical instrument. Probing the canal and preparing a glide path is done using hand files. S1[®] Plus, the system's mechanical file, has a .06 taper and is made of nickel titanium, an alloy which provides maximum elasticity and flexibility.

The instrument's performance in combination with the system's reciprocating motion minimises the risk of instrument fracture. Each time the contra-angle handpiece rotates

back, the tension in the instrument is reduced, because the S-profile's double cutting edge works in a clockwise and anti-clockwise direction alternately.

The instrument also has longer pitches, for increased flexibility.

The progressive pitch of the instrument also enables effective debris removal. The system, which consists of a mechanical instrument and hand files, comes in a sterile treatment pack or refill pack.



Micro-CT of S1[®] Plus. Shows the instrument's (green) ability to negotiate the canal (red).

Unpublished data
Dr. M. Hülsmann,
University of Göttingen, Germany



THREE STEPS

HOW TO USE THE S1® PLUS INSTRUMENTS

1. Locate the root canal using an ISO size 10 hand file and determine the working length. Always verify with an X-ray.

2. Create a glide path using a hand file of minimum ISO size 15.

3. Use the S1® Plus 25/06 instrument with a pecking movement, applying light apical pressure until the determined working length is reached.

S1® Files Small 15/06 can be used as a complement when treating narrow canals. Use Sendoline's Big Apical Files for bigger apical cleansing work.



TREATMENT PACK

STERILE PACKED AND READY TO USE

To make things easier for the dental team the S1® System's instruments come in a sterile treatment pack which is sufficient for two root canal treatments.



S1® Plus Treatment Pack

K-File 10 STERILE - 25 mm
K-File 15 STERILE - 25 mm
S1® Plus 25/06 - 25 mm
K-File 10 STERILE - 25 mm
K-File 15 STERILE - 25 mm
S1® Plus 25/06 - 25 mm



Refill packs containing 6 instruments are available in 25 mm and 31 mm lengths.



PRODUCT OVERVIEW

| REF | Product description | Pieces |
|-------------|---|------------|
| 6542471 | S1®- Contra Angle Handpiece for electric motor (40,000 rpm) Kit | Kit |
| 6574136 | S1®- A Contra Angle Handpiece for air motor (20,000 rpm) | Kit |
| OP0004 | S1®-E Plus Start Up Set* | Set |
| OP0006 | S1®-A Plus Start Up Set* | Set |
| 6583566 | S1® Apex Clip dia. 2.0 mm | 1 pc/box |
| S1P01BS | S1® Plus Treatment Pack | 6 pcs/box |
| S1P252506BS | S1® Plus 25/06 - 25 mm | 6 pcs/box |
| S1P312506BS | S1® Plus 25/06 - 31 mm | 6 pcs/box |
| S1231506BS | S1® Files Small 15/06 - 23 mm | 6 pcs/box |
| S1281506BS | S1® Files Small 15/06 - 28 mm | 6 pcs/box |
| 3521010BS | K-File 10 STERILE - 21 mm | 30 pcs/box |
| 3525010BS | K-File 10 STERILE - 25 mm | 30 pcs/box |
| 3521015BS | K-File 15 STERILE - 21 mm | 30 pcs/box |
| 3525015BS | K-File 15 STERILE - 25 mm | 30 pcs/box |
| 44234035BS | Big Apical Files 35/04 STERILE - 23 mm | 6 pcs/box |
| 44284035BS | Big Apical Files 35/04 STERILE - 28 mm | 6 pcs/box |
| 44234040BS | Big Apical Files 40/04 STERILE - 23 mm | 6 pcs/box |
| 44284040BS | Big Apical Files 40/04 STERILE - 28 mm | 6 pcs/box |
| 44234045BS | Big Apical Files 45/04 STERILE - 23 mm | 6 pcs/box |
| 44284045BS | Big Apical Files 45/04 STERILE - 28 mm | 6 pcs/box |
| 44234050BS | Big Apical Files 50/04 STERILE - 23 mm | 6 pcs/box |
| 44284050BS | Big Apical Files 50/04 STERILE - 28 mm | 6 pcs/box |
| S13487025 | S1® Paper Points Standard 06/25 | 60 pcs/box |
| S13482025 | S1® Gutta Percha Standard 06/25 | 60 pcs/box |
| 385S15001 | S5® Apex Locator | Kit |

*For more information please contact your local product specialist.



MOVEMENT BY SWEDEN

The S1® System – reciprocating, smooth and flexible. Like a dance.



Sendoline®

Box 7037 Tillverkarvägen 6 SE-187 11 Täby

Tel +46 8 445 88 30 Fax +46 8 445 88 33 info@sendoline.com www.sendoline.com