



# S1 – RECIPROCATING SINGLE FILE SYSTEM

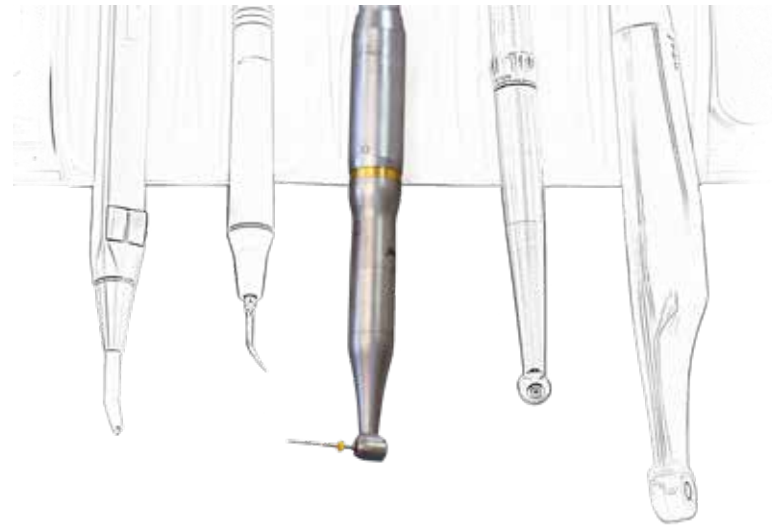
Simple. Safe. Complete.



**Sendoline**<sup>®</sup>

# S1 CONTRA-ANGLE HANDPIECE

The smart S1 contra-angle handpiece has a unique integrated gearbox which creates the reciprocating motion directly in the contra-angle, facilitating smooth operation. You connect the contra-angle handpiece directly to your dental unit with no need for an external motor.



## Simple

The S1 contra-angle handpiece is connected directly to the unit's motor. You control the handpiece by using the foot control to provide full speed.

## Safe

The combination of the reciprocating motion and the elasticity of the nickel titanium alloy used in the instrument minimises the risk of instrument fracture.

## Reliable

No external motor is needed and there are no batteries to be charged.

## Cost-effective hygiene routines

The S1 contra-angle handpiece is cleaned and handled in the same way as your other contra-angle handpieces. You do not need an extra adapter in your lubricating and cleaning machine.

## The smart accessory

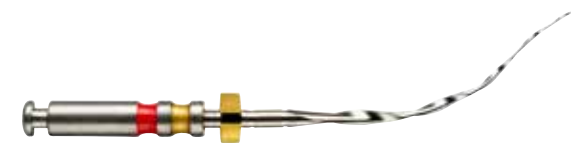
It is easy to connect an apex locator to the handpiece using the accompanying S1 Apex Clip.

# S5 Apex Locator

Use an apex locator to determine the length of the root canal. Simply connect the S1 contra-angle handpiece to an apex locator using the accompanying S1 Apex Clip.



# S1 PLUS INSTRUMENT



The S1 system allows you to carry out root canal treatment using a single mechanical instrument.

The S1 Plus instrument boasts Sendline's unique S-profile with double cutting edges, making it optimal for the S1 system's reciprocating motion.

The instrument's progressive pitch and rounded tip provide flexibility, making it easy to negotiate the canal.

## Safe

Risk of instrument fracture is minimised.

## Effective

The instrument's cutting edge and progressive pitch make it flexible and effective.

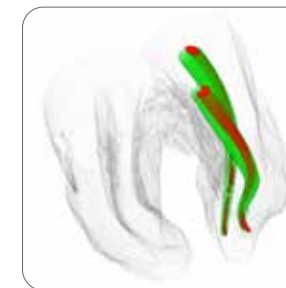
## Easy negotiation

The shape and design make it easy to negotiate the canal.

## Easy to use

The instruments are presented sterile in a blister pack - ready to use.

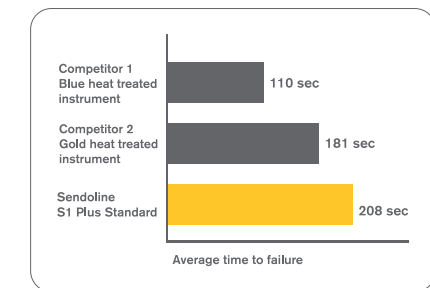
## PROVEN ABILITY TO NEGOTIATE THE CANAL AND MATERIAL RESISTANCE



Micro-CT of S1 Plus Standard. Shows the ability of the instrument (green) to negotiate the canal (red).

Effects of three reciprocating single-file NiTi-systems on root canal geometry - A micro-CT analysis

Haupt F et al.  
Presented at 19<sup>th</sup> Biennial ESE Congress



Resistance to cyclic fatigue.

Data on file.

# COMPLETE, COMPACT SYSTEM

The S1 system allows you to carry out your root canal treatment using a single mechanical instrument. S1 Plus Standard 25/06 is used for most cases. Choose S1 Plus Small 15/06 if you are treating narrow, constricted canals and S1 Plus Large 40/04 for larger canals.

The S1 system also includes sterile packs of paper points and the appropriate size of gutta percha points for the S1 Plus Standard and S1 Plus Large instruments. S1 – a complete, compact system.



S1 Plus Standard 25/06



S1 Plus Small 15/06

When S1 Plus Standard 25/06 does not reach the determined working length.



S1 Plus Large 40/04

In larger canals where a K-file 20 easily reaches the determined working length.

# MOVEMENT BY SWEDEN

The S1 System - reciprocating, smooth and flexible. Like a dance.

## PRODUCT OVERVIEW

REF	Product description	Pieces
6542471-1	S1-E Contra Angle Handpiece for electric motor (40,000 rpm)*	Kit
6542472	S1-E Contra Angle Handpiece for electric motor (40,000 rpm)**	Kit
OP0007	S1-E Plus Start Up Set 2.0***	Set
6583566	S1 Apex Clip dia. 2.0 mm	1 pc/box
S1P01BS	S1 Plus Treatment Pack	6 pcs/box
S1P252506BS	S1 Plus Standard 25/06 - 25 mm	6 pcs/box
S1P312506BS	S1 Plus Standard 25/06 - 31 mm	6 pcs/box
S1P251506BS	S1 Plus Small 15/06 - 25 mm	6 pcs/box
S1P311506BS	S1 Plus Small 15/06 - 31 mm	6 pcs/box
S1P254004BS	S1 Plus Large 40/04 - 25 mm	6 pcs/box
S1P314004BS	S1 Plus Large 40/04 - 31 mm	6 pcs/box
259-705	S1 Paper Points Standard	120 pcs/box
258-708	S1 Paper Points Large	120 pcs/box
159-605	S1 Gutta Percha Standard	60 pcs/box
158-608	S1 Gutta Percha Large	60 pcs/box
385S15001	S5 Apex Locator	Kit

\*Including 1x S1 Plus Treatment Pack

\*\*Including 1x Sendoline S3 Assortment

\*\*\*For more information contact your local sales representative or Directa.